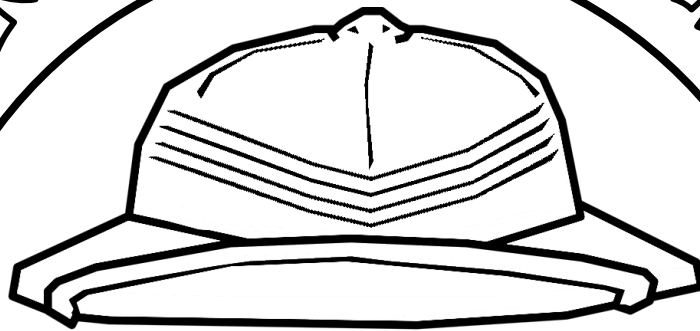


Safari Phil's Animal Adventures

PRINT AT HOME



ACTIVITY PACK 1

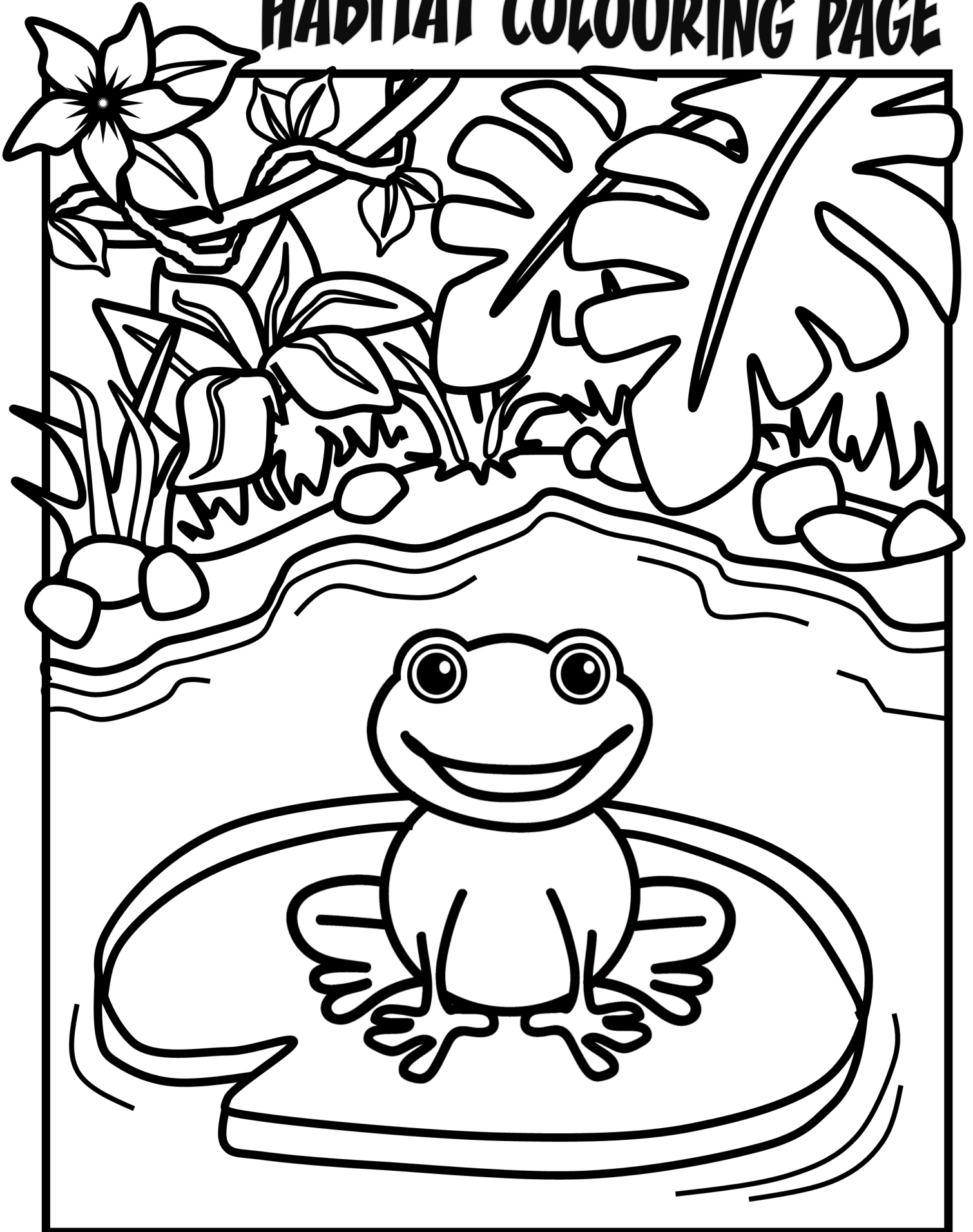
Enjoy our free print-at-home activity packs, to both entertain & educate your little ones!

More free downloads updated regularly over at

safariphil.co.uk/goodies

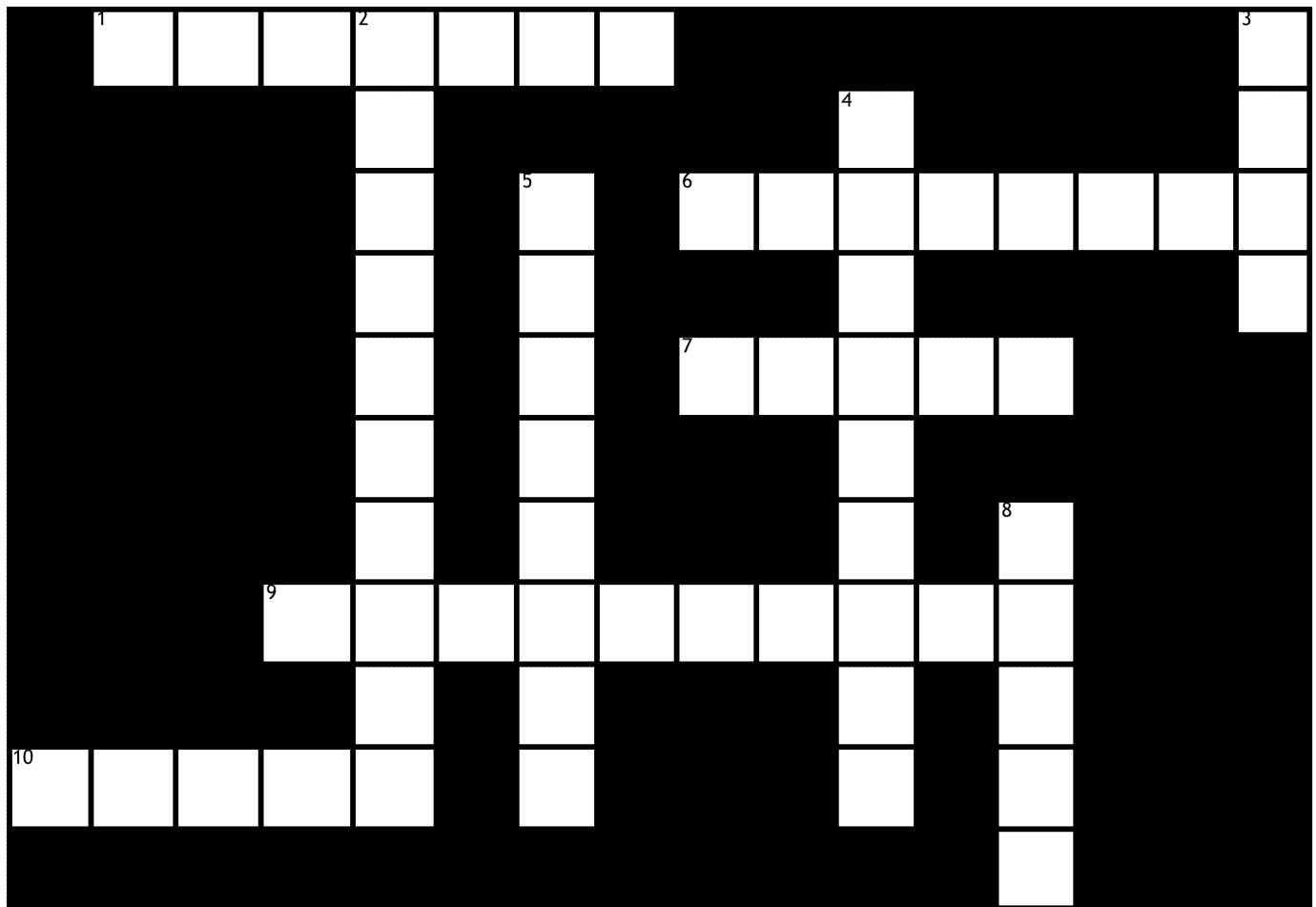
Don't forget to share your creations with us on social media

HABITAT COLOURING PAGE



Amphibians live part of their lives on land, and part in water!

Critter Crossword!



Across

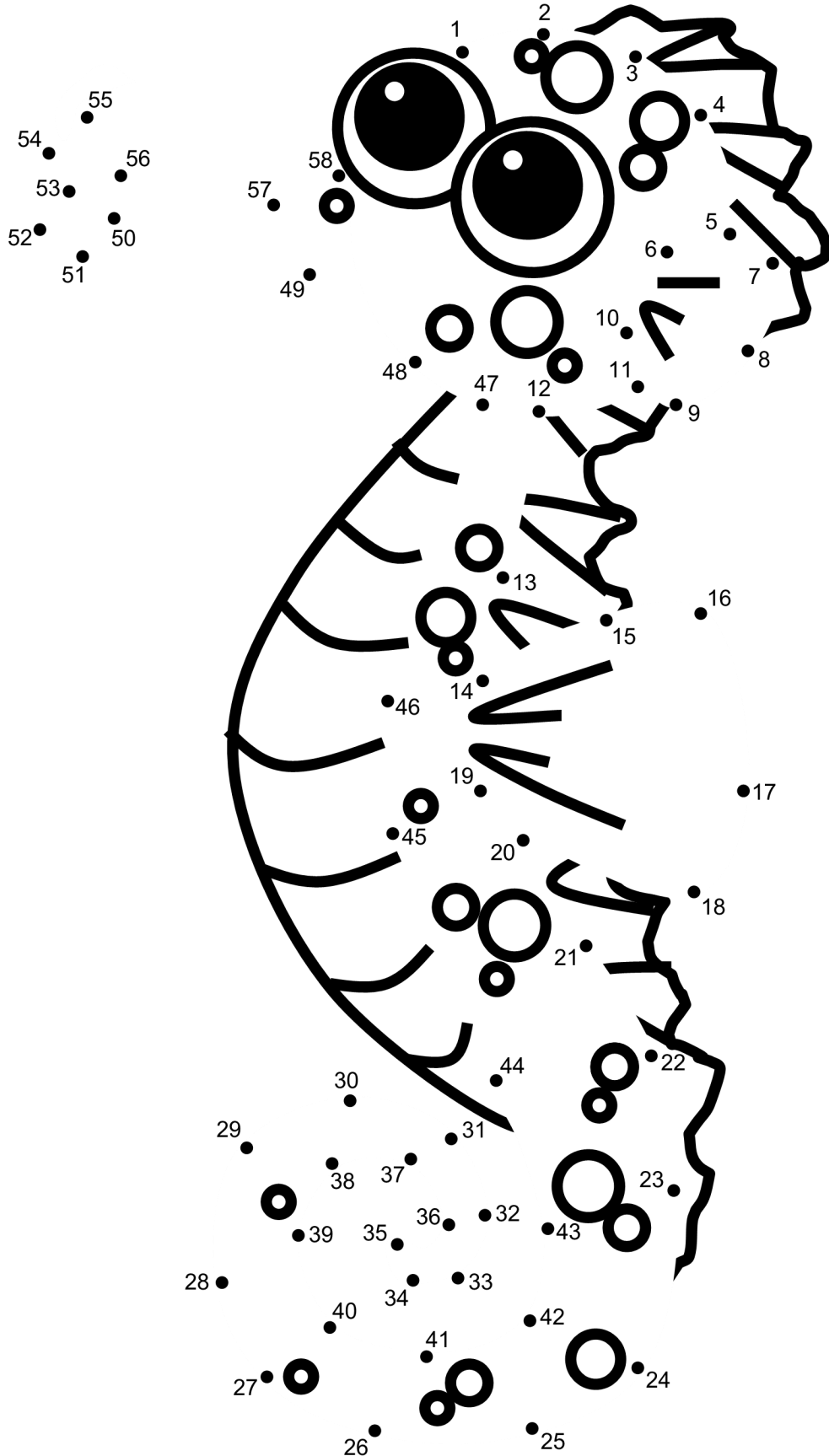
1. The tallest mammal in the world, with a very long neck. (7)
6. Long hairs on the faces of cats, rats and mice. (8)
7. Largest habitat in the world! Home to whales, sharks and turtles. (5)
9. The colour and patterns on an animal that help them to blend into their surroundings. (10)
10. Birds and bats use these to fly. (5)

Down

2. Frogs, toads and newts are all in this vertebrate group. (10)
3. Birds built these to lay their eggs and raise their chicks. (4)
4. Some animals need to _____ through winter. (9)
5. Animals whose diets include meat, vegetation, and a bit of everything. (8)
8. A sandy habitat, where water meets the land. (5)

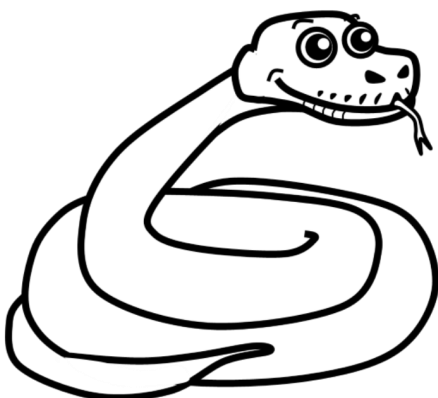
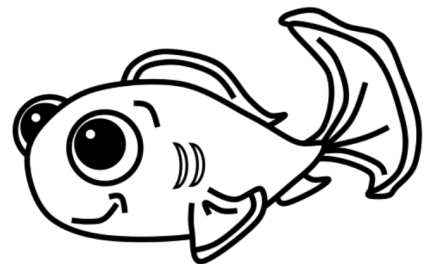
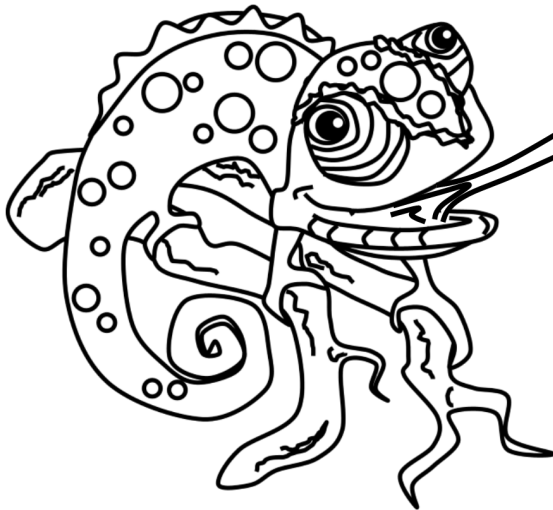
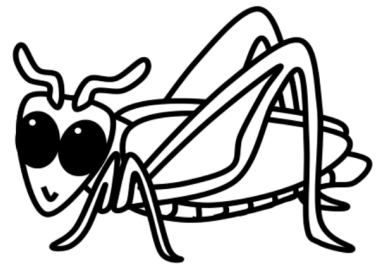
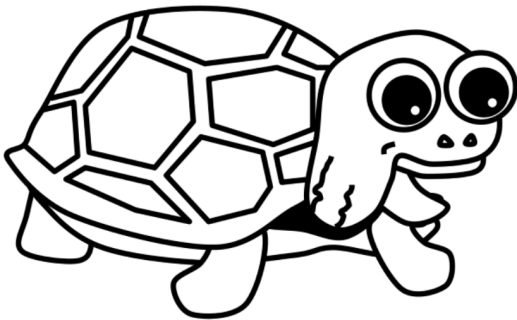
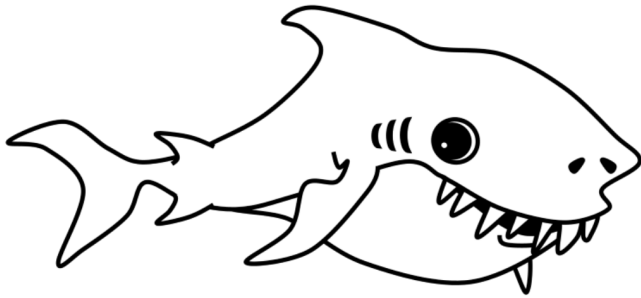
Dot-2-Dot

Connect the dots to reveal the hidden Critter!



Critter Food Match-Up!

Can you connect the critters to their correct diet?



Spot-The-Difference!

Can you find the 10 differences between the 2 pictures?

